



**Certificate of Analysis**

R&D

Client Information:

**CYPRESS HEMP LLC**  
10771 Perkins Rd  
Suite A  
BATON ROUGE, LA 70810

Batch # 1356  
Batch Date: 2023-11-27  
Extracted From: Hemp

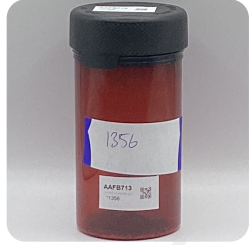
Test Reg State: Oregon

Order # CYP231127-170001  
Order Date: 2023-11-27  
Sample # AAFB713

Sampling Date: 2023-11-29  
Lab Batch Date: 2023-11-29  
Completion Date: 2023-12-03

Initial Gross Weight: 75.582 g  
Net Weight: 43.682 g

Number of Units: 1  
Net Weight per Unit: 8736.400 mg



Product Image



**Potency 10**  
Specimen Weight: 1502.300 mg

**Tested**  
SOP13.001 (LCUV)

**Potency Summary**

Pieces For Panel: 5

Analyte	Dilution (1:n)	LOD (%)	LOQ (%)	Result (mg/g)	(%)
CBD	10.000	5.40E-5	0.015	3.680	0.368
Delta-9 THC	10.000	1.30E-5	0.015	2.500	0.250
CBC	10.000	1.80E-5	0.015	<LOQ	<LOQ
CBDA	10.000	1.00E-5	0.015	<LOQ	<LOQ
CBDV	10.000	6.50E-5	0.015	<LOQ	<LOQ
CBG	10.000	2.48E-4	0.015	<LOQ	<LOQ
CBGA	10.000	8.00E-5	0.015	<LOQ	<LOQ
CBN	10.000	1.40E-5	0.015	<LOQ	<LOQ
THCA-A	10.000	3.20E-5	0.015	<LOQ	<LOQ
THCV	10.000	7.00E-6	0.015	<LOQ	<LOQ
Total Active CBD	10.000			3.680	0.368
Total Active THC	10.000			2.500	0.250

<b>0.250%</b> Total Active THC 21.841 mg	<b>0.368%</b> Total Active CBD 32.150 mg
- Total CBG None Detected	- Total CBN None Detected
- Other Cannabinoids None Detected	<b>0.618%</b> Total Cannabinoids 53.991 mg
<b>0.25%</b> Total DELTA-9-THC 21.841 mg	

*Aixia Sun*  
Aixia Sun Lab Director/Principal Scientist  
D.H.Sc., M.Sc., B.Sc., MT (AAB)



Definitions and Abbreviations used in this report: Total Active CBD = CBD + (CBD-A \* 0.877), \*Total CBDV = CBDV + (CBDVA \* 0.87), Total Active THC = THCA-A \* 0.877 + Delta 9 THC, Total THC = THCV + (THCVA \* 0.87), CBG Total = (CBGA \* 0.877) + CBG, CBN Total = (CBNA \* 0.877) + CBN, Total CBC = CBC + (CBCA \* 0.877), Total THC-O-Acetate = Delta 8 THC-O-Acetate + Delta 9 THC-O-Acetate, Total THCP = Delta8-THCP + Delta9-THCP, Other Cannabinoids Total = Total Cannabinoids - All the listed cannabinoids on the summary section, Total Detected Cannabinoids = Delta6a10a-THC + Delta8-THC + Total CBN + CBT + CBE + Delta8-THCV + Total CBG + Total CBD + Total THCV + CBL + Total THC + Total CBC + Total CBDV + Delta10-THC + Total THC-O-Acetate + Total THCP. (mg/ml) = Milligrams per Milliliter, LOQ = Limit of Quantitation, LOD = Limit of Detection, Dilution = Dilution Factor (ppb) = Parts per Billion, (%) = Percent, (cfu/g) = Colony Forming Unit per Gram (cfu/g) = Colony Forming Unit per Gram, LOD = Limit of Detection, (µg/g) = Microgram per Gram (ppm) = Parts per Million, (ppm) = (µg/g), (aw) = Water Activity, (mg/Kg) = Milligram per Kilogram, ACS uses simple acceptance criteria. Passed - Analyte/microbe is not detected or is at the level below the action limit per OR rule OAR 333-007-0390, OAR 333-007-0400. Failed - Analyte/microbe is at the level that equal or above the action limit per OR rule OAR 333-007-0390, OAR 333-007-0400 Sample not received via laboratory sampling.

This report shall not be reproduced, without written approval, from ACS Laboratory. The results of this report relate only to the material or product analyzed. Test results are confidential unless explicitly waived otherwise. ACS Laboratory is accredited to the ISO/IEC 17025:2017 Standard.